



Thanks for purchasing our product, please read this manual carefully before using it

Please be sure to keep it for future reference

This manual is subject to change without any notice

Orbita shall not be held accountable for any accident and hazard arising from
incorrect user operations



Orbita Smart Lock P8030 Installation and User Manual

Huizhou Orbita Technology Co., Ltd. (Marketing Center and Manufacturing Base in China)
Address: Orbita Technology Park, Changbu Village, Xinxu Town, Huiyang District, Huizhou,
Guangdong Province, P.R.C

Tel: +86-752-3633501 +86-752-3633502 +86-752-3633503

Fax: +86-752-3633600; +86-752-3633900

Customer Service Hotline: 400-834-6688

(Huizhou Orbita Technology Co., Ltd. reserves the right of final interpretation of this manual)

V2019-01

Table of Contents:

1. Product Overview

1.1 Appearance	2
1.2 Features	3
1.3 System Configuration	3
1.4 Technical Specifications	4
1.5 Safety Precautions	5
1.6 Charging Safety	5
1.7 Maintenance	5

2. Product Installation

2.1 Product List	6
2.2 Installation Instructions	6
2.3 Installation Diagrams	7
2.4 Installation Preparation	7
2.5 Installation Steps	8

3. Operating Guide

3.1 Initial Menu	9
3.2 Operating Menu Overview	9
3.3 Administrator Setting	10
3.4 Delete an Administrator	11
3.5 Set a Common User	11
3.6 Register a Temporary User	12
3.7 Delete a Common or Temporary User	12
3.8 Data & Statistics	13
3.9 System Setting	13
3.10 Initialization Setting	14

4. Connection Setting

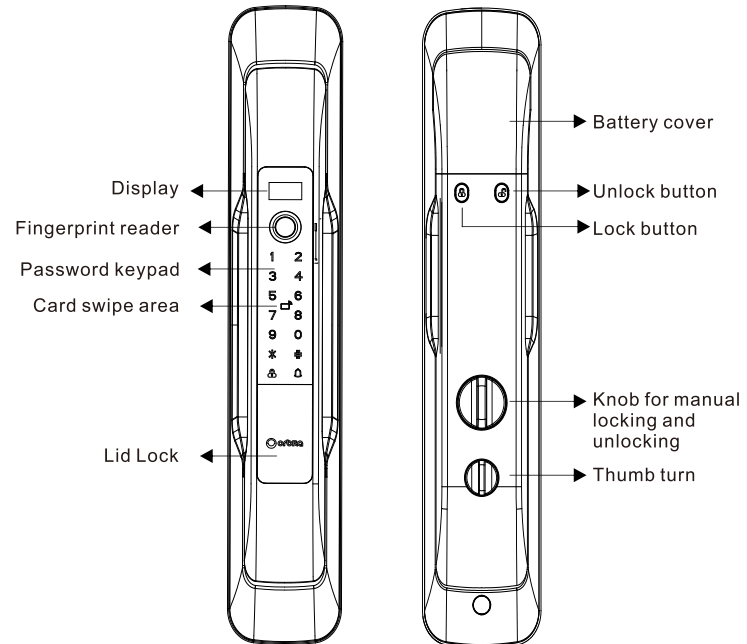
5. Unlocking by WeChat Instructions

1 : Product Overview

P8030 is a fully automatic smart fingerprint lock packed with multiple advanced technologies for your home, intelligent community and office.

Suitable for wooden doors, security doors, and metal doors, P8030 is equipped with C-class safe and intelligent cylinder intended to resist cutting, smashing, prying and other attempts at theft.

1-1:Appearance



1-2:Features

1. Unlocking modes: fingerprint, key card, mechanical key, password, ekey authorized in WeChat mini program and remote unlocking through mobile APP.
2. Semiconductor fingerprint reader: semiconductor biometric recognition of less than 0.5 seconds.
3. Surface finish: electroplating.
4. Theft & prank prevention function: The system generates an alarm and triggers the two-minute lockout after 5 straight wrong inputs.
5. Scramble PIN code: The password is composed of 6 digits or more, and fuzzy password input is supported. That is, you may input numbers randomly before and after the correct password to unlock.
6. Emergency cylinder: C-class cylinder.
7. Low voltage alarm: When the battery voltage is lower than 7.2 V, it alarms each time upon unlocking. And you can still unlock for about 200 more times, and after that, you cannot unlock, so be sure to charge or replace the battery before reaching the limit.
8. Unlocking records can be checked.
9. Combined unlocking: If it is enabled, you must enter two types of user information to unlock.
10. Single unlocking is supported.
11. You can enable or disable the voice prompt based on your needs.

1-3:System Configuration

1. 0.96-inch OLED LCD screen with narrow bezel.
2. Touch keypad with 12 + 2 keys: 12 white keyboard LEDs + doorbell key - one -press locking key. There are two keys on the rear panel: one-press unlocking and locking keys.
3. Capacity: 200 sets of fingerprint + password +card (You can set a virtual password before and after your password), including 9 sets for administrator (ID: 001-009), 181 sets for common users (ID: 010-190), and 10 sets for temporary users (ID: 191-200).
4. Doorbell: Electric doorbell.

1-4:Technical Specifications

- Material: zinc alloy
- Operating voltage: DC 8.4 V
- Emergency cylinder: C-class cylinder
- Thumb turn function: fully automatic electronic thumb turn
- Fingerprint reader: semiconductor biometric recognition of less than 0.5 seconds.
- Quiescent current: $\leq 80 \mu\text{A}$
- Operating current: $\leq 600 \text{ mA}$
- Batteries: rechargeable lithium battery
- Low battery voltage alarm: $\leq 7.2 \text{ V}$
- Sensor resolution: V500 dip
- Control system: Single circuit
- Capacity: 200 sets (fingerprint + password + key card)
- Power consumption at power-on of networking module: 120 to 140 mA
- Door handing: adjustable
- Setting mode: voice navigation
- Card reading distance: $< 10 \text{ mm}$
- Screen: 0.96-inch OLED LCD screen
- Resolution: 160×160 pixels
- Keys: 12 touch keys and 2 physical keys
- Unlocking records: 300 pieces
- Operating temperature: -20°C to 60°C
- Operating humidity: $< 80\%$
- Door thickness: 40 to 110 mm
- Voice prompt: Chinese/English
- Scramble PIN code: 16-digit anti-peeping scramble PIN code. With the IC card, an electronic key user can be added

1-5 Safety Precautions

1. Keep the panel away from corrosive substances to avoid damage to the surface coating.
2. Do not operate the product with wet hands to prevent liquids such as water or drinks from entering the lock body.
3. Do not press the keypad with excessive force or with sharp objects.
4. Keep your fingers clean while using this product. To ensure normal use, keep the fingerprint area clean as the surface may become smudged after it is used for a period of time.
5. Do not pull the product with excessive force.
6. Do not use water, benzene or alcohol to clean the product; use a soft and dry cloth to clean the lock body.

1-6 Charging Safety

1. The battery specification of this product is 7.4 V, 2600 mAh. Do not use any other charger to avoid any accident resulting from battery damage or reduced battery life. Please use the original charger when charging (5v=2A charger) 100-240 V AC, 50/60 Hz, 0.5A.
2. Do not immerse the battery into water or sea and guard it against damp. Do not approach the battery to heat sources like fire or heater.
3. Please use the appropriate charger when charging. Do not reverse the polarity of the battery.
4. Do not discard the battery to fire or place it on a hot object. Do not charge near fire or under the extremely hot environment.
5. Do not short-circuit the polarity of the battery with any conductor.
6. Do not weld the battery directly. To ensure the safety functions of the safety device in the battery, please do not disassemble or change any part of the battery.

1-7 Precautions for Use

1. Do not install batteries before the lock is installed on the door.
 2. Please carefully keep your password and change it on a regular base to prevent leaks.
 3. Charge or replace the batteries within one week after the battery replacement alarm sounds.
 4. Make sure that the door is completely locked when leaving.
- If you fail to open the door using the fingerprint, password or card, you can use the mechanical key. Please keep the mechanical key properly.

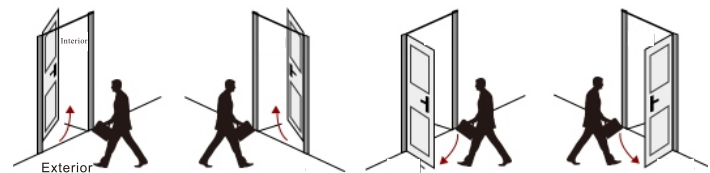
2-1:Product List

SN	NAME	Amount	Note
1	Front panel	1	
2	Rear panel	1	
3	Lock body	1	6052 lock body
4	Installation kit	1	
5	Installation guide	1	
6	Mechanical key	2	
7	Lithium battery	1	Rechargeable lithium battery
8	Strike plate	1	
9	Strike plate case	1	
10	Epoxy card	3	One primary card and two secondary cards
11	Cutout template	1	
12	Warranty certificate	1	
13	Charging equipment	1	One charger and one charging cable
14	Square shaft + stud	1 for each	

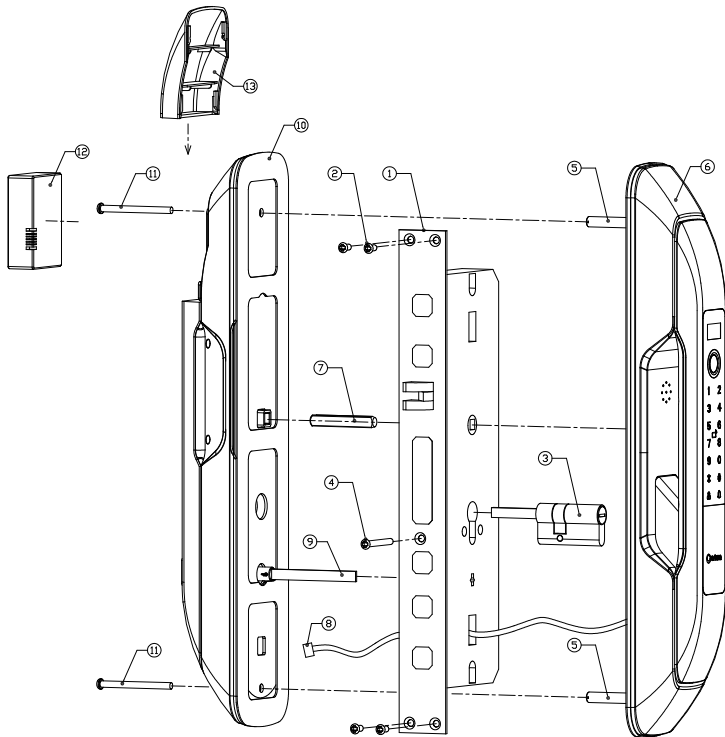
(Please check carefully after unpacking. If any part is missing, please contact your seller immediately.)

2-2:Installation Instructions

Confirm the door handing (this smart lock can be used for left-hand outswing, left-hand inswing, right-hand inswing and right-hand outswing doors)

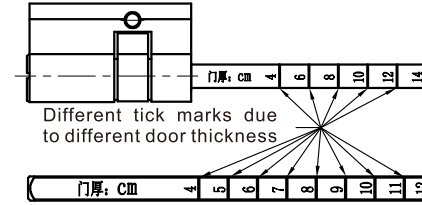


2-3 :Installation Diagrams

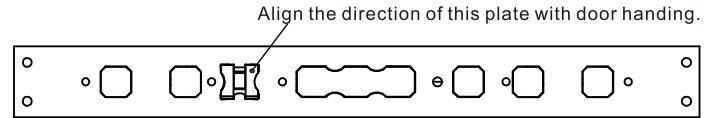


2-4 :Installation Preparation

1. Drill a hole on the door according to cutout template.
2. Cut the "cylinder lever" and "positioning square shaft" according to the door thickness.



3. The length of panel screws equals to door thickness minus 15 mm.
E.g. the screw length applied to 60mm door thickness is 45 mm (60 mm - 15 mm).
4. Align the direction of latch bolt plate of lock body with door handing.



2-5: Installation Steps:

1. Put the lock body ① into the door hole drilled before. (Note: Latch bolt should be above)
 2. Fasten 4 screws ② to fix the lock body
 3. Put the cylinder ③ into the lock body
 4. Fasten screws ④ to fix the cylinder
 5. Place two studs ⑤ on the bottom plate of the front panel
 6. Insert the front panel ⑥ into the door hole
 7. Insert the positioning square shaft ⑦ into lock body hole and through the positioning hole of the front panel
 8. Connect the front panel wires ⑧ with the rear panel socket
 9. Insert thumb turn cam ⑨ into knob hole of the lock body
 10. Place the rear panel ⑩ on the door and align it with fixed square shaft ⑦
 11. Fasten two panel screws ⑪
 12. Install battery ⑫
- Install the battery cover ⑬

3 : Operating Guide

(Note: * key is used for returning to previous menu or deleting, while # key is used for confirming or completely exiting admin mode)

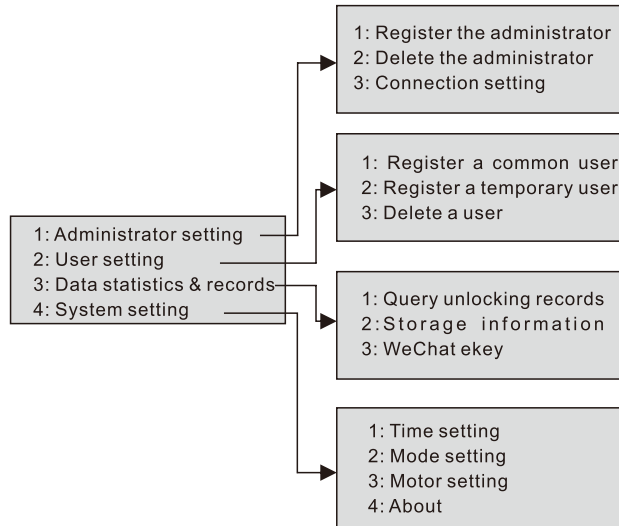
3-1: Initial Status

The default unlocking password of the product is 123456.

The default password will be automatically deleted after registering administrator information.

3-2 :Operating Menu Overview

Press “1” and then “#” to enter menu in admin mode



3-3:Administrator Setting

Note: ID numbers for administrator is 001 - 009. When it is used up, you will hear “capacity is used up” and the system will return to the main menu. Touch keypad to wake up the device, and press “1”, then “#”, you will hear “please enter administrator information”. Next, enter the default password “123456” and press “#” for confirmation, you will hear “successful”.

(If the password your enter is wrong, you will hear “failed” and the system will exit and enter into sleeping mode), with screen display as below:

- 1: Administrator setting
- 2: User setting
- 3: Data statistics & records
- 4: System setting

You can use number keys to enter relevant menu for setting, press “*” to return to the previous menu.

Press “1” to enter the screen display for administrator setting option

- 1: Register the administrator
- 2: Delete the administrator

Press “1” to enter “register the administrator” option, you will hear “please enter registration number”. You can input the number selected within “001 - 009”. Enter “001” and press “#” for confirmation, you will hear “please enter fingerprint, password or key card”

A:Enter the fingerprint: When you hear “Please enter fingerprint, password or key card”, press your finger on the fingerprint area three times according to the voice prompt (The same fingerprint is required in this process). After hearing “successful registration”, you can add next one or press “*” to return to the previous menu. If fingerprint registration fails you will hear “failed” and the system will return to the previous menu. Please follow the above steps until registration succeeds.

B:Enter the password: Set a 6-digit password through number keys, you need to enter twice according to the voice prompt, and press “#” for confirmation each time. After the input is completed, you will hear “successful registration” and the system will return to the previous menu. If password setting fails, you will hear “failed” and system will return to the previous menu.

C:Enter the key card: Swipe the card accompanied with the product near the swipe area once, you will hear “successful registration” and system will return to the previous menu.

3-4 Delete an Administrator

Press “1” and then “#” to enter “Management Mode”. Input one of the administrator information -“Fingerprint/Card/Password” according to the voice prompt. Once completed, there will be voice prompt indicating “operation succeeded”, and the screen will display as in Figure (1). Press “1” and then “#” to open the “administrator setting” menu, and the screen will display as in Figure (2). Then press “2” to select the option “delete the administrator”, and press “#” for confirmation, and the screen will display as in Figure (3). Enter the administrator number (001~009) that you’d like to delete, and then press “#” for confirmation. At that time, there will be a voice prompt “delete successfully”.

1: Administrator Setting
2: User Setting
3: Data Statistics & Records
4: System Setting

Figure(1)

1: Register the Administrator
2: Delete the Administrator

Figure(2)

Please enter the number
to be deleted
00
001~009

Figure(3)

3-5 Set a Common User

(Note: User ID No.: 010-190, a voice prompt “stock is full”, and system returns to the main menu) Press “1” and then “#” to enter “Management Mode”. Input one of the administrator information - “fingerprint/card/password” according to the voice prompt for verification. After the verification is passed, there will be a voice prompt “verification passed”, and the screen will display as in Figure 4. Press the button “2” to select “User Setting”, and then the screen will display as in Figure 5. Select “1: Register a Common User”, and the screen will display as in Figure 6. Enter the number within “010-190” (including 010 and 190), and then there will be a voice prompt “Input Fingerprint/Password/Card”.

A: Input the fingerprint: According to the voice prompt, the user’s finger tabs on the fingerprint reading area twice, and then there will be a voice prompt “Operation Succeeded”;

B: Input the password: Enter the password for the user twice in succession, and then there will be a voice prompt “Operation Succeeded”;

C: Input the card: Swipe the card for the user close to the sensor twice, and then there will be a voice prompt “Operation Succeeded”

1: Administrator Setting
2: User Setting
3: Data Statistics & Records
4: System Setting

Figure(4)

1: Register a common user
2: Register a temporary user
3: Delete a user

Figure(5)

Please enter the number
00
001~009

Figure(6)

3-6 Register a Temporary Common User

Press “1” and then “#” to enter “Management Mode”. Input the administrator information - “Fingerprint/Password/Card” according to the voice prompts for verification. After the verification is passed, there will be a voice prompt “verification passed”, and the screen will display as in Figure 4. Press the button “2” to select “user setting”, and then the screen will display as in Figure 5. Enter “Register a temporary user” by pressing “2” and “#”, and then the screen will display as in Figure 7

Please enter the registration number
191
191-200

Figure(7)

Starting Time: **:***
Ending Time: **:***

Figure(8)

Registered successfully
Registration No.: **

Figure(9)

There will be a voice prompt “Please input fingerprint/password/card” when entering a number within “191-200”

A: Input the fingerprint: According to the voice prompt, have a finger of a temporary user pressed at the fingerprint sensor twice and then the screen will display as in Figure 8. Enter the starting period and ending period by pressing the button. Once completed, the screen will display as in Figure 9 and there will be a voice prompt “operation succeeded”.

B: Input the password: According to the voice prompt, enter the password for the temporary user twice and then press “#”. Then follow the voice prompt to set the starting period and ending period. Once completed, the screen will display as in Figure 9 and there will be a voice prompt “operation succeeded”;

C: Input the card: Swipe the card for the temporary user close to the sensor, and then follow the voice prompt to set the starting period and ending period. Once completed, the screen will display as in Figure 9 and there will be a voice prompt “operation succeeded”

3-7 Delete a Common or Temporary User

Press “1” and then “#” to enter “Management Mode”. Input the administrator information according to the voice prompt for verification. Once completing the verification, the screen will display as in Figure 10. Select “Delete a User” by pressing the button “3”, and then the screen will display as in Figure 11.

1: Register a Common User
2: Register a Temporary User
3: Delete a User

Figure(10)

1: Delete by Number
2: Delete all

Figure(11)

A:Delete by Number: Delete by entering the number to be deleted and pressing the “#” button;

B:Delete all: Delete all the common users and temporary users

3-8 Data Statistics & Records

Enter “Management Mode” by press “1” and “#”, and then verify the administrator information. After that, the screen will display as in Figure 1. Then enter into the menu “data statistics and records” by pressing the number key “3”, and the screen will display as in Figure 2. Enter the menu by pressing the corresponding number -key.

1: Administrator Setting
2: User Setting
3: Data Statistics & Records
4: System Setting

Figure 1

1: Unlocking Records Check
2: Stored Information Statistics
3: Unlocking by WeChat

Figure 2

3-8-1: Unlocking Records Check: Enter “Unlocking Records Check” by pressing “1”.The lock can store up to 300 pieces of records, including ID of the user who opens the door, and unlocking mode and time. The statistics shown on the screen is shown in Figure 3:

Record: ***
No.: ***
Unlocking by password/card/fingerprint
2019-05-20 15:00

Figure 3

1: Administrator Statistics
2: User Statistics

Figure 4

3-8-2: Stored Information Statistics: Enter “user statistics” by pressing “2”, and the screen will display as in Figure 4. Enter the statistics by pressing the corresponding number key, and the screen will display as in Figure 5:

3-9 System Setting

Enter “Management Mode” by pressing “1” and “#”, and then verify the administrator information. After that, press number “4” to enter the “System Setting” as shown below Figure 6:

Fingerprint: ***
Card: ***
Password: ***
Total Capacity: ***
Available Capacity: ***

Figure 5

1: Time Setting
2: Mode Setting
3: Motor Setting
4: About

Figure 6

3-9-1 Time Setting: Input “1” to enter “Time Setting”. Set up the year, month, day, hour and minute by entering the numbers.

3-9-2 Mode Setting: Input “2” to enter the “Mode Setting”. Here you can configure the “Verification Mode”, “Mute Mode” and “Language Setting”.

3-9-3 Motor Settings: Input “3” to enter the “Motor Setting”. Here you can configure the “Left-Hand/Right-Hand Opening” and “Motor Power Setting”.

3-9-4 About: Input “4” to enter the “About” option. Here you can check the version information.

3-10 Initialization Setting

Simultaneously press the “+” and the “-” on the rear panel, and then the screen will show as below:

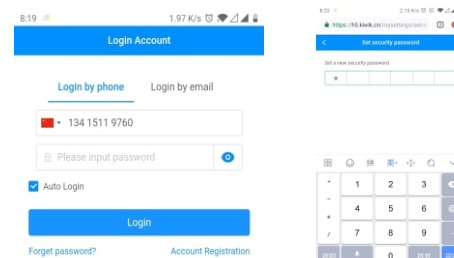
1: Initialize
2: Ignore

3-10-1 Initialize: After selecting this option, the number keys “7” and “8” on the front panel will blink, and there will be a voice prompt “Initialization Succeeded”, that is, the smart lock is restored to the factory defaults, and all the information set before will be lost.

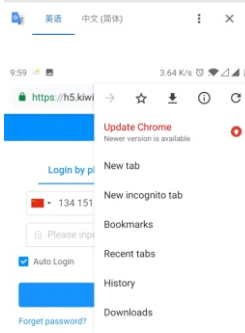
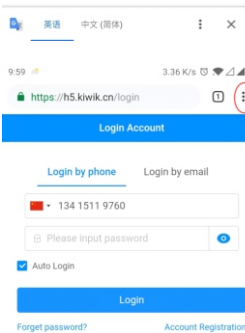
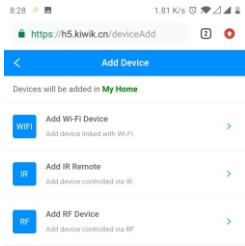
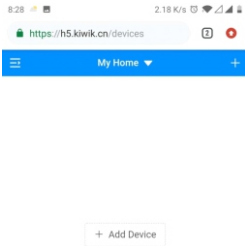
3-10-2 Ignore: No action.

4 : Connection Setting

1. Open <https://www.h5.kiwik.cn> in browser (recommend Google browser) or scan QR code
2. Register account/ Login your account
3. Input your corresponding account and password. Set your security code



4. Click "Add Device"- "Add Wi-Fi Device"

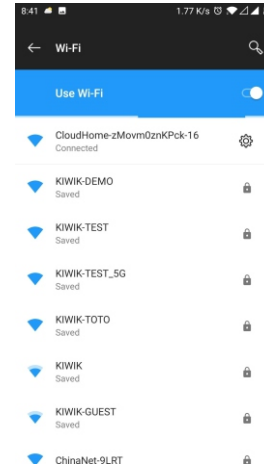


5.1 Connect Hotspot

Enter the Management page of the device. Turn on the hotspot mode (details refer to lock user manual)

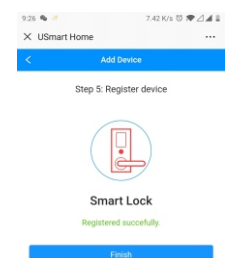
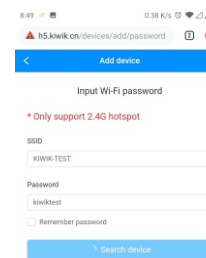
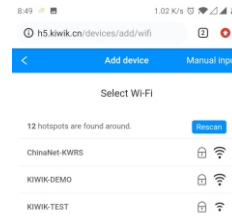
5.2 Connect Hotspot

Go to mobile setting, connect the network which start with CloudHome end by 16, click next



6. Connect family Wi-Fi network

Go back to the web browser, select your house Wi-Fi network, input password, click search device



7. Save app to mobile desktop Click menu – Add to Home Screen (Android)

5 : Unlocking by WeChat Instructions

1: Scan the below QR code of the mini program with WeChat to enter the homepage of the mini program. Click “Add Smart Lock” button



2: The homepage is shown as Figure 1 below. You can choose the desired icon by clicking it. Then enter the alias of the smart lock, and the password with the demoks Okey function (Note: “password with demoksOkey function” means password of the administrator whose ID is 001).

Click the “add now” button to enter the interface as shown in Figure 2. Tab the big button to enter the interface as shown in Figure 3. Click “New” button, and there are four types of password (as shown in Figure 4) for you to choose in the new interface (Note: To open the door with the WeChat mini program, you need to sync the time on the lock to the time of the phone)

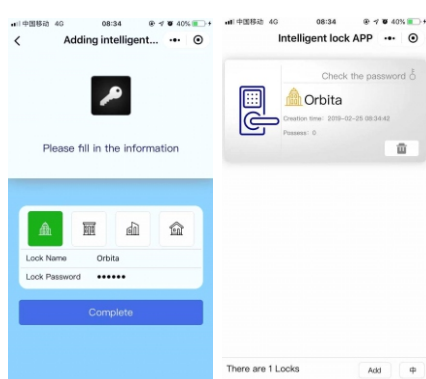


Figure 1

Figure 2

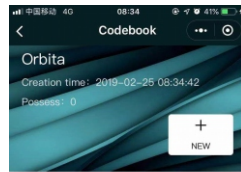


Figure 3

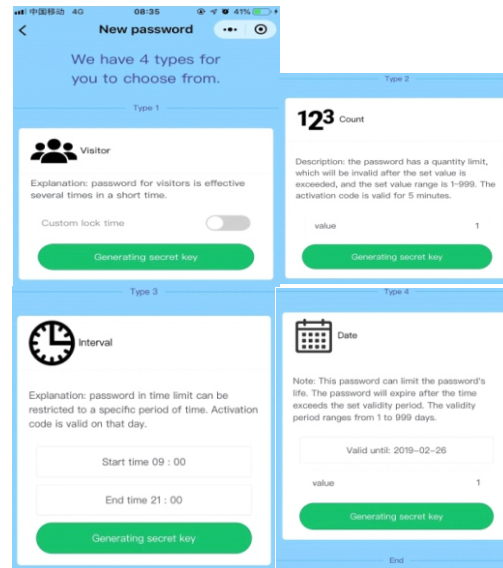


Figure 4

3: Select one of the four kinds, and then click “generating secret key”. This will pop up a screen as shown in the Figure 5 below.

Select “share” and then the screen as Figure 6 will pop up. You can share it on WeChat to the person who needs it by clicking “share”.

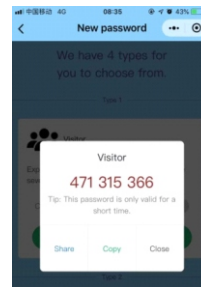


Figure 5

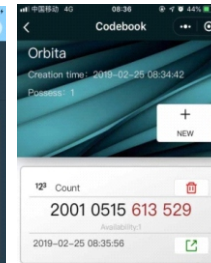


Figure 6

4: Here are the instructions on the 4 types of keys on WeChat:

4-1: For visitors

This type of key has the same function as the old version of “demoksOkey” mini program - they both support custom lock time. The full password field it generated is exactly the unlocking code.

4-2: For 123 count

The “123 count key” can set the unlocking quantity limit, and the set value range is 1~999. The full password field it generated is the activation code (the activation code is valid for 5 minutes), and the last 6 digits in red is the unlocking code. (The unlocking code is permanently valid)*Only after the activation code is entered on the lock to indicate activation successful can the unlocking code be used during its valid period.

4-3: For interval

The “interval key” can set the unlocking time limited to a specific period of time. The full password field it generated is the activation code (the activation code is valid for 5 minutes), and the last 6 digits in red is the unlocking code.*Only after the activation code is entered on the lock to indicate activation successful can the unlocking code be used during its valid period.

4-4: For date

The “date key” can set the effective date of the password. The password will expire after the effective date.

The full password field it generated is the activation code (the activation code is valid for 5 minutes), and the last 6 digits in red is the unlocking code.

*Only after the activation code is entered on the lock to indicate activation successful can the unlocking code be used during its valid period.

