



## User Manual of Orbita Smart Lock

(P8010 Smart Lock for Your Home V1.0)



Shenzhen Company: (Overseas Marketing Center)

Shenzhen Orbita Technology Co., Ltd.

9C-9D, Shangshuijing Complex, No. 333, Jihua Road, Buji Street,

Longgang District, Shenzhen, Guangdong Province, P.R.C.

Tell : +86-755-83369158 +86-755-83368958

Fax : +86-755-83617778

Huizhou Factory: (Marketing Center in China)

Huizhou Orbita Technology Co., Ltd.

Orbita Technology Park, Changbu Village, Xinxu Town, Huiyang

District, Huizhou, Guangdong Province, P.R.C

Tel : +86-752-3633501 +86-752-3633502 +86-752-3633503

Fax : +86-752-3633600 +86-752-3633900

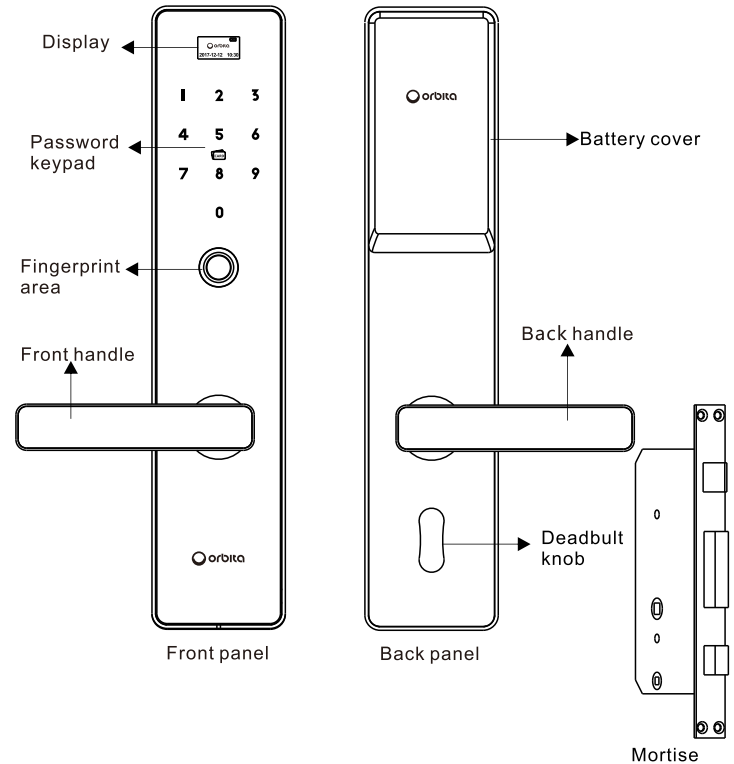
Website: [www.orbitatech.com](http://www.orbitatech.com)

## Table of Contents

Table of Contents .....	1
Appearance .....	2
Technical Specifications .....	3
Features .....	4
Product list .....	5
Installation Instructions And Requirements .....	5
a. Adjust the Direction of the Handle .....	5
b. Adjust the Direction of the Lock Clutch .....	5
Maintenance .....	6
Safety Precautions .....	6
Operation Flow Diagram for Fingerprint, Password, .....	7
and Card Setting	
Operation Flow Diagram for Connecting Your Mobile .....	11
Phone to the Smart Lock	
Precautions for Use .....	14

## Appearance

Instructions for use : Dear users, thank you for using this smart lock. Please read the installation instructions carefully before installing and using this product, and follow the instructions while installing. Orbita shall not assume any responsibility for any product problems, hazards and losses directly or indirectly caused by failure to follow the instructions while installing the smart lock.



## Technical Specifications

Material	High strength stainless steel			
Operating voltage	DC 6V (Four batteries)			
Deadbolt knob function	Lock by lifting the handle directly			
Fingerprint reader	Semiconductor biometric recognition of less than 0.5 seconds			
	False accept rate	<0.001%	Light Interference	NO influence
	False reject rate	<0.05%	Sensor Resolution	508 dpi
	Image	160X160pixel		
		256 colors		
Time	<120 ms			
Static current	<60uA			
Operating current	<300mA			
Battery Life	8 to 12 months			
Low battery voltage alarm	<4.8V			
Password + fingerprint + card capacity	200 pieces			
Power consumption for initiating the networking module	120 to 140 mA			
Door handing	Left-hand swing and right-hand swing			
Setting mode	Voice navigation			
Card reading distance	<10mm			
Door Thickness	40 to 110 mm			
Language	Voice prompt.Bilingual switching(Chinese/English)			
Scramble PIN Code	16-digit anti-peeping scramble PIN code. With the M1 card, and electronic key user can be added			
Operating Temperature	-20°C to 60°C			
Operating Humidity	<80%			
Screen	0.96LEDscreen			

Unlocking records	99pieces
Unlocking methods	Fingerprint, card, mechanical key, and password (standard 4-in-1); Wi-Fi (optional) WeChat applet
Sensor frequency	13.56MHZ
Applicable scope	Wooden doors, security doors, copper doors, stainless steel doors, etc.

## Features

- 1.Unlocking methods: Fingerprint, card, mechanical key, and password (standard 4-in-1); Wi-Fi (optional).
- 2.Semiconductor fingerprint reader: semiconductor biometric recognition of less than 0.5 seconds.
- 3.Surface finish: electroplating.
- 4.Internal construction: The smart lock is composed of the electronic part and the clutch part, and is easy to disassemble.
- 5.Theft & Prank prevention function: The system generates an alarm and triggers the one-minute lockout after 5 straight wrong inputs (invalid card, wrong password or fingerprint).
- 6.Scramble PIN code: The password is composed of 6 digits or more, and fuzzy password input is supported. That is, you may add in random numbers before and after the correct password to unlock.
- 7.Emergency cylinder: C-class lock cylinder.
- 8.Low voltage alarm: When the battery voltage is lower than 4.8 V, it alarms each time upon unlocking. And you can still unlock for about 200 more times, and after that, you cannot unlock, so be sure to replace the battery before reaching the limit.
9. Networking will automatically turn off when the battery is below 5.0V.
10. Built-in anti-tamper alarm function.
- 11.Unlocking records can be checked.
- 12.Single unlocking is supported.
- 13.Combined unlocking: If it is enabled, you need two of the four unlocking methods to unlock.
- 14.You can enable or disable the voice prompt based on your needs.
- 15.You can keep the lock normally open or closed based on your needs.

## u Operating Instructions

### Ø Factory Defaults

The default administrator password is "123456". By default, any 6-digit password, card, and fingerprint can be used for unlocking. After the administrator is registered and logs in to the lock system successfully, the default password is automatically deleted. And only the registered administrator and users are allowed to unlock.

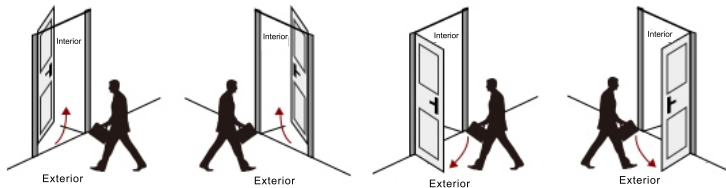
## Product List

Please check carefully after unpacking. If any part is missing, please contact your seller immediately.

SN	Name	Quantity	Remarks
1	Front panel	1	
2	Back panel	1	
3	Lock body	1	6052 lock body
4	Installation kit	1	
5	Installation guide	1	
6	Mechanical keys	2	
7	Strike plate	1	
8	Strike plate case	1	
9	Door cards	3	Primary card 1/secondary card 2
10	Cutout template	1	
11	Warranty certificate	1	
12	User Manual	1	

## Installation Instructions and Requirements

Confirm the door handing (this smart lock can be used for left-hand outswing, left-hand inswing, right-hand inswing and right-hand outswing doors)



Left-hand inswing

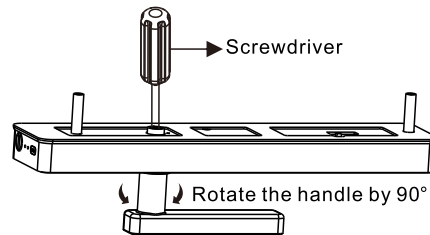
Right-hand inswing

Left-hand outswing

Right-hand outswing

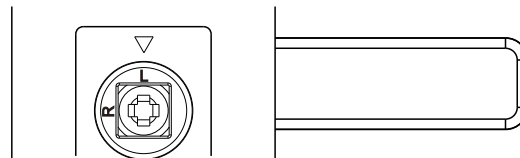
### a). Adjust the direction of handle

Remove the handle fastening screw using a Phillips screwdriver to loosen the handle. Rotate the handle 90 degrees to the desired opening position, and then tighten the screws.



### b). Adjust the direction of lock clutch

When installing, align the "R" or "L" of the arresting lever with the arrow on the bottom plate ("R" for right-hand swing and "L" for left-hand swing) according to the door handing.



## Maintenance

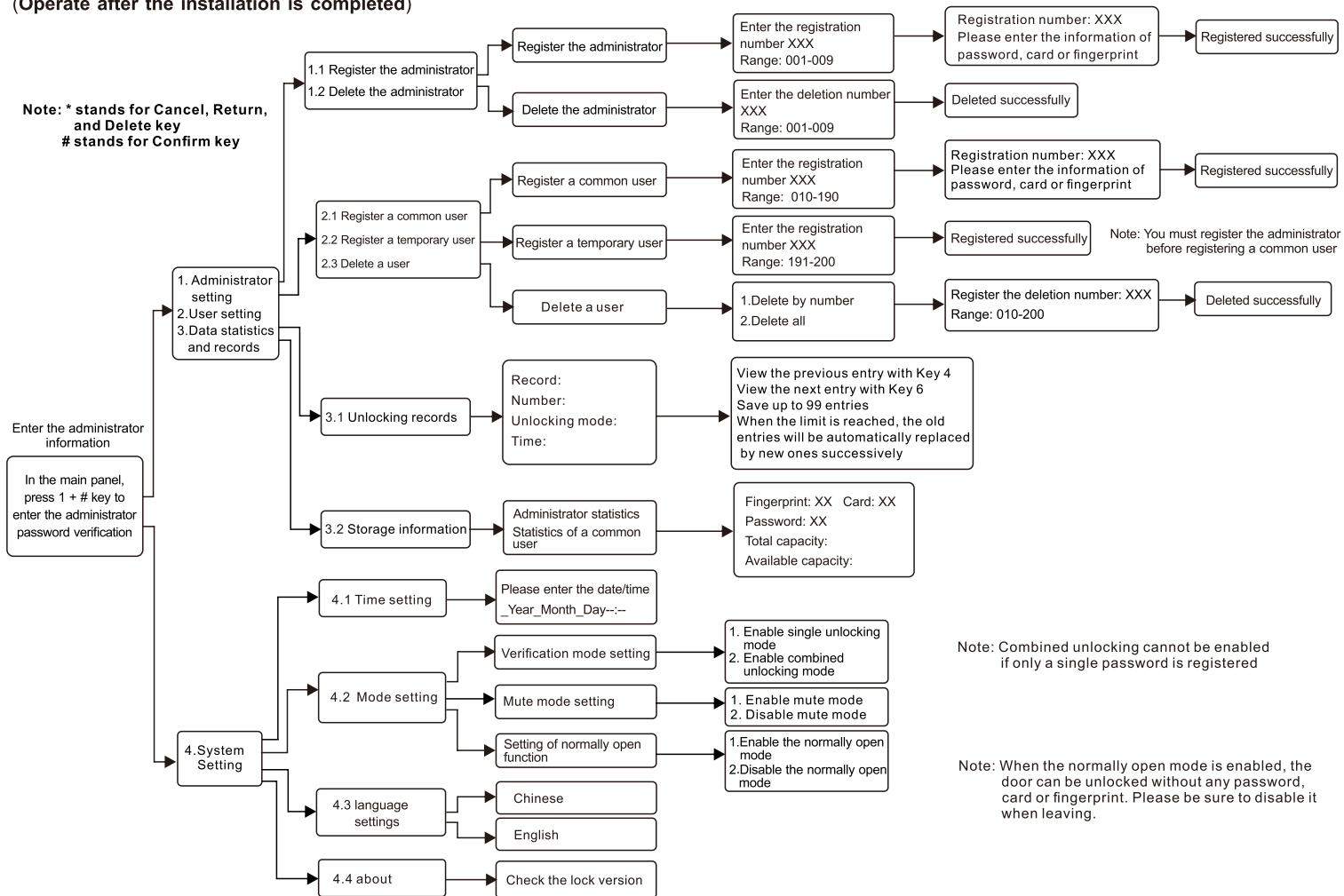
1. Keep the panel away from corrosive substances to avoid damage to the surface coating.
2. Do not operate the product with wet hands to prevent liquids such as water or drinks from entering the lock body.
3. Do not press the keypad wildly or with sharp objects.
4. Keep your fingers clean when using this product. To ensure normal use, keep the fingerprint area clean as the surface may become smudged after it is used for a period of time.
5. Do not yank or pull the product.
6. Do not use water, benzene or alcohol to clean the product; use a soft and dry cloth instead.

## Safety Precautions

1. Change the default password before use.
2. Do not install batteries before the lock is installed on the door.
3. Please carefully manage your password and change your password regularly to minimize the risk of burglary.
4. Replace the batteries within one week after the battery replacement alarm sounds.
5. Make sure that the door is completely locked when leaving.
6. If you fail to open the door using the fingerprint, password or card, you can use the mechanical key. Please keep the mechanical key properly.

# Operation Flow Diagram for Fingerprint, Password, and Card Setting (Operate after the installation is completed)

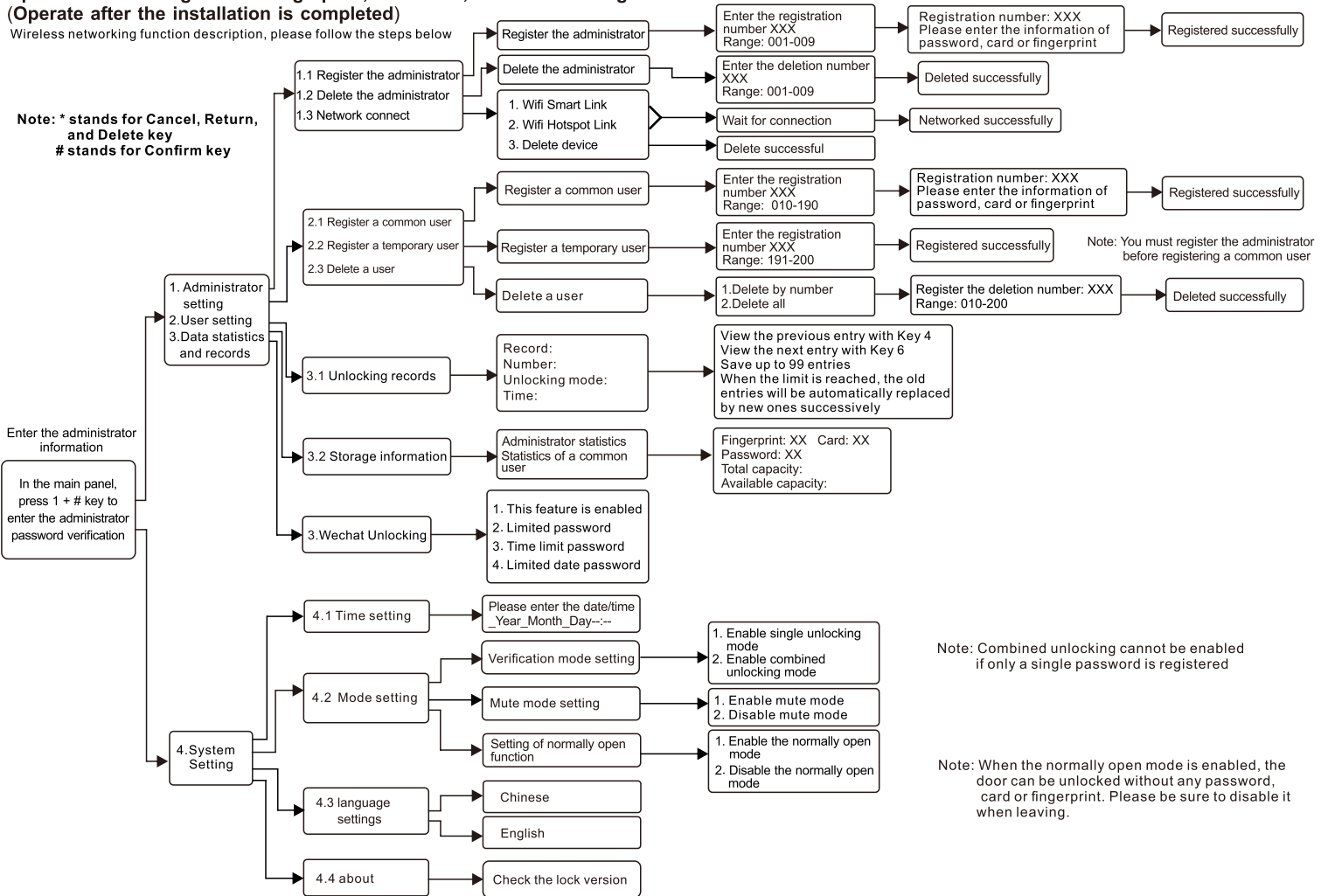
**Note: \* stands for Cancel, Return, and Delete key  
# stands for Confirm key**



# Operation Flow Diagram for Fingerprint, Password, and Card Setting (Operate after the installation is completed)

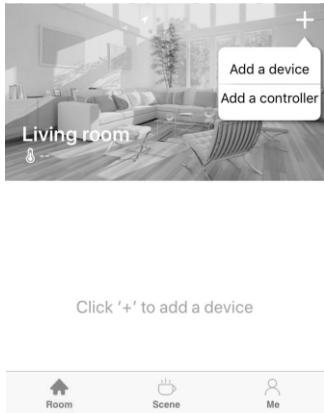
Wireless networking function description, please follow the steps below

**Note: \* stands for Cancel, Return, and Delete key  
# stands for Confirm key**

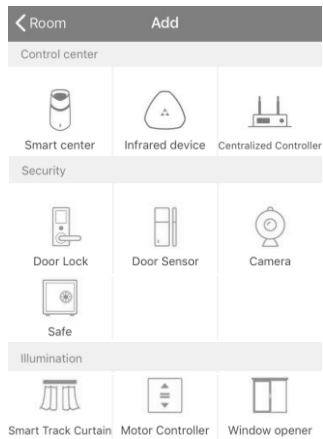


## Operation Flow Diagram for Connecting Your Mobile Phone to the Smart Lock

1. Download and open the software "USmart Home"



2. Choose the smart lock



3. Choose network connection



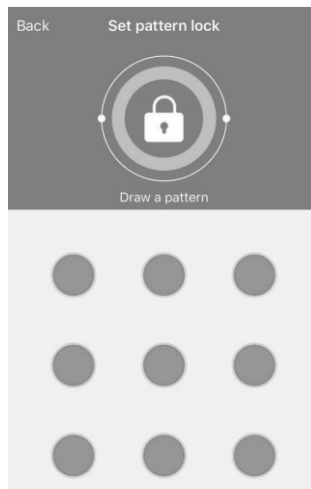
4.1



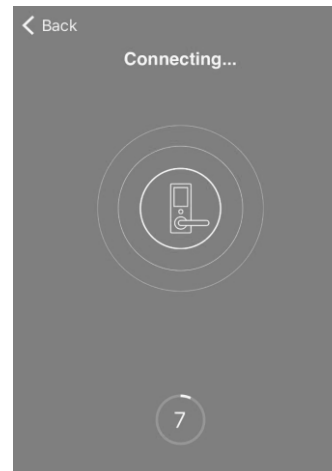
5. Operate the lock: Add the administrator - Add a mobile phone to enter the "Connecting..." interface



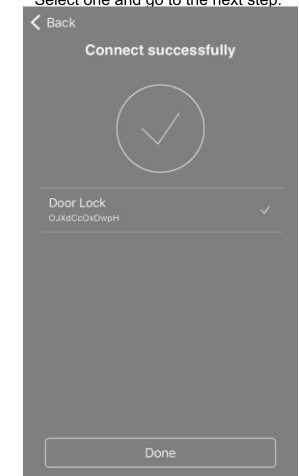
4. Set a pattern password



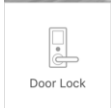
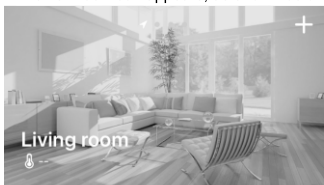
5.1



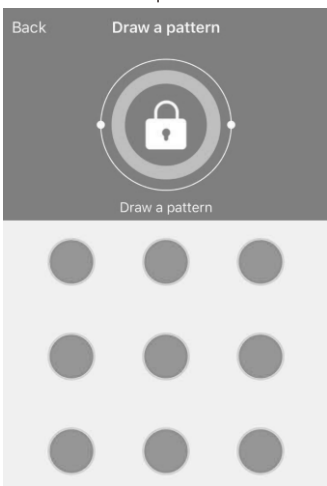
6. Select the room to be added (required). Select one and go to the next step.



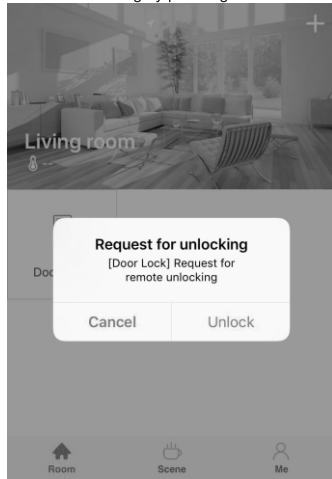
7. A smart lock icon appears, as shown below.



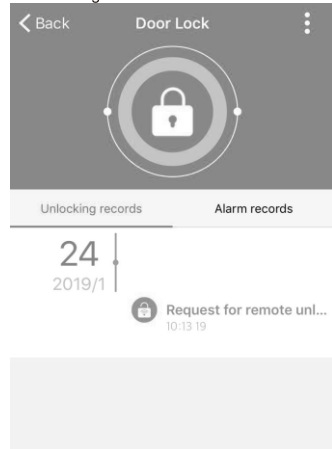
9. Unlock with the set pattern



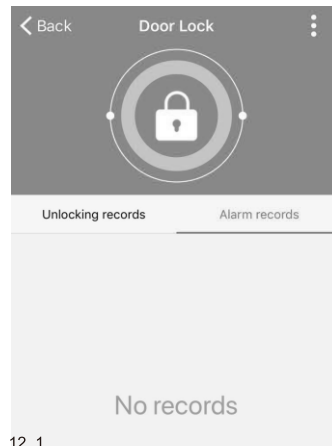
8. Remote unlocking can be used upon successful connection. You can request remote unlocking by pressing 0+#



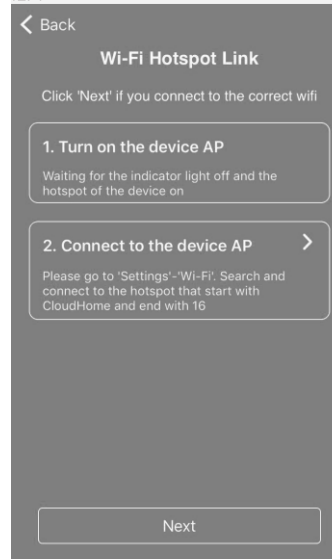
10. There will be a prompt for successful unlocking



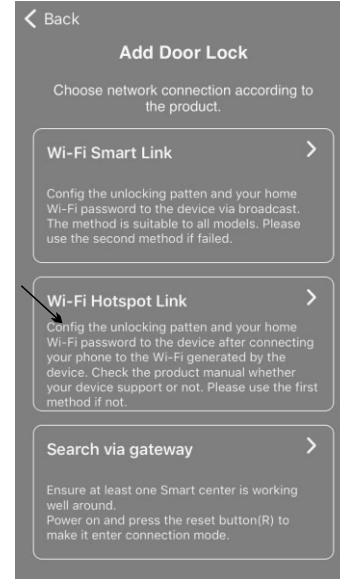
11. Query unlocking records



12. 1



12. Wi-Fi Hotspot Link



#### Precautions for Use

1. After the mobile phone has been added, if the information is only deleted on the APP but not on the lock, you will be unable to add the mobile phone to the lock again as it is not completely deleted. You need to delete the mobile phone both on the lock and the App.
2. The mobile phone can only be added successfully when the mobile phone and the Wi-Fi module are connected to the same Wi-Fi network.
3. You can add up to 10 mobile phones.
4. You are advised to set your phone to allow the App to push notifications.